

C O M P A N Y P R O F I L E

[www.faraone.it](http://www.faraone.it)

***FARAONE***

TRANSPARENT ARCHITECTURE





FARAONE AROUND THE WORLD

"A crisis can be a real blessing to any person, to any nation. For all crises bring progress."

Albert Einstein

**STAIRCASES,  
RAILINGS, CANOPIES,  
POINT-FIXED CURTAIN  
WALL.**





# ABOUT US

---

Faraone is part of FARAONE GROUP, a family-owned company comprising three business divisions.

Two over 4000 square meters units, 125 employees, branches in Poland, Spain and Denmark. Our company is the Italian market leader in its field.

Faraone is an Italian company creating interior staircases, point-fixed glass systems, curtain walls, canopies, railings and balustrades.

# OUR FIRM

---

Faraone is based in Tortoreto (TE), in the Abruzzo region | 25 employees |

A 10-member qualified team, comprising architects, designers, engineers and technicians, all aimed to provide full technical assistance.

| 1500 clients in domestic market | Projects realized in 25 countries | A 2000 square meters unit | Green company: our items are 100% recyclable | We are a 100% Made in Italy company.

# OUR CERTIFICATIONS

---

ISO:9001 | UNI:9001 | EN: 9001



# OUR HISTORY

---

**1969** - Mr. Sabatino Faraone sets up the company, which still bears his name, in an approximately 80 squares meters area. The team is composed of a workman and tree apprentices.

**1973** - The company moves to a 2000 square meters new corporate headquarter.

**1976** - Mr. Faraone joins his first worker, a surveyor and an accountant, building with them a new company named SEVA, whose purpose was to follow minor projects.

**1978** - The company produces its first aluminum staircase. Two years later, this structured innovation process has been implemented in ISA (now IMA), a new company's division led by Piero Faraone (Sabatino's brother).

**In the 80's** Faraone Group begins a sustained period of growth, especially in 1988, when they launched the revolutionary "SOLARIA": a ventilated double-skin facade with thermal transmittance to a value of  $0.94 \text{ W / m}^2 \text{ K}$  and noise reduction up to 55 dB (data processing and certification: ISTITUTO GIORDANO). Those data are still relevant today.

**90's** - The group gains significant knowledge and expertise in producing aluminum staircases and continues to grow considerably.

**2000** - Faraone broaden its horizon producing new types of curtain walls, something never seen before in the Italian market, providing a complete set of components and ensuring quality and professionalism.

**2004** - Faraone takes part at SAIE2, in Bologna, and presents the first steel&glass staircase, designed by the architect Mauricio Cardenas Laverde. It was an important step toward becoming a more recognized international reality, setting research and innovation as undisputed Faraone Group's trademarks.

**2008** - New exclusively designed products find their ways to market: glass, steel-like aluminum and stainless steel banisters and balustrades.

**2010** - As the result of the ambition to succeed and continuous improvements, new innovative items enjoy the range of products: niche creations give the company a strong distinctive identity, the right effort to overcome any crisis.





# OUR EXPERTISE

---

Long-term experience in the field is one of our biggest strengths.

We share over forty years' experience with our business partners. Faraone is a very popular name in Italy and has quickly become an important reference point abroad.

The will to overcome future challenges is part of company's DNA which constantly adapts itself to modern requirements and anticipates future trends.

Faraone believes that an efficient internal R&D department is important for both technical and stylistic choices. An entire internal production department is dedicated to products destined to public, private, technical checks, and customer service.

All our products have been separately tested and certified by an international accredited laboratory. Our products completely satisfy, and in some cases exceed, all applicable security obligations, guidelines and regulations in Italy and Europe. We pursue the highest security standards in products design, preserving quality, customer safety and innovation. Faraone's components manufacturing process consists in selecting reliable suppliers managing specific quality control plans.

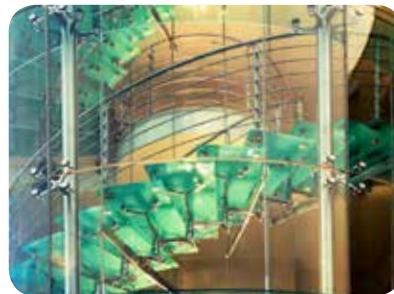
Although our domestic market is represented by a network including as many as 400 partners, Faraone is a foreign market oriented company, exporting around 30% of its production.

# OUR CUSTOMERS

---

Bmw | Bulgari | Mercedes | Hilton | Ferrari | Fuksas | Botta

10 - FARAONE / ITALIAN STYLE



# STAIRCASES

---

## > HIGH INTERIOR STAIRCASES DESIGN

Real hanging sculptures becoming interior protagonists, as a result of a unique evolved design effort. Light and darkness contrasts, glass and stainless steel generating chromatic aberrations, solidity and brightness synthesis. Faraone's interior staircases have been brought to light by a first intuition: modeling lost-wax cast stainless steel and preserving glass harmonious aesthetic combination.

Faraone's staircases are designed to perfectly fit in any interior with a wide range of components variables.

## > STAIRCASES MODELS:

BALLOON – Design M. Rosa Lucarelli e Vittorio Alloggio

MISTRAL – Design Matteo Paolini

MATHIS - Design Matteo Paolini

TITANIA – Design Roberto Volpe

TWIN – Design Roberto Volpe

IMPERIALE – Design Mauricio Càrdenas Laverde

ANIMA – Design Mauricio Càrdenas Laverde

REGALE - Design Mauricio Càrdenas Laverde

12 - FARAONE / ITALIAN STYLE





# BALUSTRADES

---

## > DESIGN & SAFETY

Faraone has developed a wide range of balustrades matching all customer's needs with aesthetic applications. We use only high quality materials such as steel, aluminum and glass creating solid, unique and recognizable structures.

innovative LED lighting solutions propel our systems into the future.

Safety is our strength: all our products are subject to stringent tests, therefore obtaining their certifications in accordance with Italian and European law. Faraone balustrades provide endless solutions to all your needs.

Safety and "made in Italy" design are combined to offer a unique experience.

## > BALUSTRADES LINES:

Stainless Steel | Stainless Steel & Glass | Aluminium | Aluminium&Glass |  
Enclosure

## > DESIGN BY:

Nino Faraone

Matteo Paolini

Roberto Volpe

Fabrizio Zepponi



# CURTAIN WALL POINT-FIXING

---

## > THE POINT-FIXED GLASS SYSTEM TECHNOLOGY.

Glazing systems designed to catch light and reflect it as the absolute protagonist. Glass cladding construction and installation represent the company's core business since its inception: Faraone is currently at the forefront of "double skin" glass facade systems.

Aware of its inspired innovation, Faraone has been focusing on point-fixing technology, emphasizing transparency and design flexibility.

AIR SYSTEM together with QUADRIFOGLIO SYSTEM (made by stainless steel tensile structures, steel structures, extruded aluminum and glass vertical structures), glass fins, rotules and spiders are the distinct programs qualifying Faraone as an exclusive international supplier for point-fixing transparent architectures.

KLIMA is the fastest, cheapest and easiest way to create a wide open facade. Klima system has been designed to use insulated glass without drilling. Klima introduces a new way of relating to the outside world, thanks to a wide open glass wall providing an insulation power of  $U_cW 0,7 \text{ W/m}^2\text{K}$  and ensuring no dispersion.

VETRISSIMO T and VETRISSIMO N are the perfect combination of design and technology for sophisticated shingled glass facades. The horizontal overlap of the glass provides both good ventilation and good protection from weather. This system stands out for its ease of installation; the mount is particularly suitable for attached facades of buildings, arcades and staircases glazed with permanent ventilation.





# CANOPIES

---

## > NEW URBAN DÉCOR AND MORE

Design meets function to create aesthetic solutions for an high emotional impact. Their names are Linea, Sfera, Aries, Gran Sasso and Clock: these are Faraone's canopies. Their strengths are high quality, extreme solidity and, flexibility at the same time, characteristics suitable for any customer's needs.

They're available in several sizes offering a wide range of customization such as silk screen design. All glasses are tempered, laminated and combined with Aisi 316 stainless steel accessories.

## > CANOPIES MODELS:

LINEA - Design Sabatino Faraone

GRAN SASSO - Design Sabatino Faraone

CLOCK - Design Roberto Volpe

SFERA - Design Roberto Volpe

ARIES - Design Roberto Volpe



# GLASS PARTITIONS, DOORS, BOX

---

## > ELEGANCE AND FUNCTIONALITY MERGE INTO GLASS LIGHTNESS

A wide range of accessories and systems separating interior spaces: sliding doors, hinged doors, automatic gates, electronic closing doors, all-glass wall partitions. Box shower: linear, square and curved.

Faraone's range of doors takes shape thanks to multiple distinct aesthetic solutions, providing outstanding reliability over time.

The Company has undertaken a concrete design process, constantly interested in introducing new functional innovations in order to provide higher performance structures.

Amid transparency, reflections, colours, dynamic interiors relating to one another, along with space design and modern furnishings constitute a whole.

An overall vision connecting technological innovation and stylistic variety, and creating space solutions successfully adapted to every environment.

Aluminum and glass: two eco-friendly natural materials, always used to create new aesthetic and functional solutions.

## > OUR LINES:

Glass Partitions | Glass Doors | Glass Box-Shower





# WE ARE KEEN ON DESIGN

---

We consider design as an integral part of any project.

Faraone's planning system consists in studying new product lines and paying attention to any new product detail.

New product line development and endless furnishing solutions are based on aesthetic sensibility and ongoing materials research.

Synergy between internal and external design gives life to our ideas and reach you.

## > INTERNAL DESIGNERS:

Nino Faraone

Matteo Paolini

Roberto Volpe

Fabrizio Zepponi

## > EXTERNAL DESIGNERS:

Mauricio Cardenas Laverde

Massimo Iosa Ghini

M. Rosa Lucarelli

Vittorio Alloggio



Export department  
Mr. Luca Renzitti  
renzitti@faraone.it  
+39 393 9547816  
+39 0861 784225

**FARAONE SRL**  
Via Po, 12 64018 Tortoreto (TE)  
Italy  
T. +39 0861 784200  
F. +39 0861 781035  
faraone@faraone.it  
www.faraone.it

