

C O M P A N Y P R O F I L E

[www.faraone.it](http://www.faraone.it)

***FARAONE***

TRANSPARENT ARCHITECTURE

italian style



FARAONE AROUND THE WORLD

"Crisis is the best blessing that could ever happen, for people and for countries, because it leads to a personal development and to progress".

Albert Einstein

**STAIRCASES,  
RAILINGS, CANOPIES,  
POINT-FIXED CURTAIN  
WALL.**



## ABOUT US

---

Faraone Srl is part of FARAONE GROUP, a business group that includes three companies owned by Faraone Family. Two units of 4000 square meters, over 125 employees, branches in Poland, Spain and Denmark. Our Company is leader on the Italian market.

Faraone is an Italian company that creates interior staircases, point-fixed glass system, curtain walls, canopies, railings and balustrades.

## OUR FIRM

---

Faraone is located in Abruzzo which is in the south center of Italy, in the city of Tortoreto | 25 employees | a team of 10 qualified people made up of architects, designers, engineers and technicians in order to provide a full support | 1500 clients on domestic market | Projects realized in 25 countries | Unit of 2000 square meters | Green company: our items are 100% recyclable | We are a 100% Made in Italy Company.

## OUR CERTIFICATIONS

---

ISO:9001 | UNI:9001 | EN: 9001



## OUR HISTORY

**1969** - Mr. Sabatino Faraone sets up the company that still bears his name. The firm covered an area of about 80 square meters and employed one worker and three apprentices.

**1973** - The company moves to a new corporate headquarter of 2000 square metres

**1976** - Mr. Faraone joins with the first worker, building surveyor and accountant in order to create a new company together, called SEVA, with the aim of following minor projects.

**1978** - We manufacture the first aluminum staircase. Two years later this specific production becomes a new company division, which will be called ISA, now IMA, led by Sabatino's brother Piero. This company becomes quickly the leader of European market with factories located in Italy, Spain and Poland.

**1988** - The 80's mark the rise for Faraone Group which in 1988 features the revolutionary "SOLARIA": a ventilated double-skin facade with thermal transmittance up to a value of  $0.94 \text{ W / m}^2 \text{ K}$  and noise reduction up to 55 dB (data certified by ISTITUTO GIORDANO). These values maintain a respectable result even in our days.

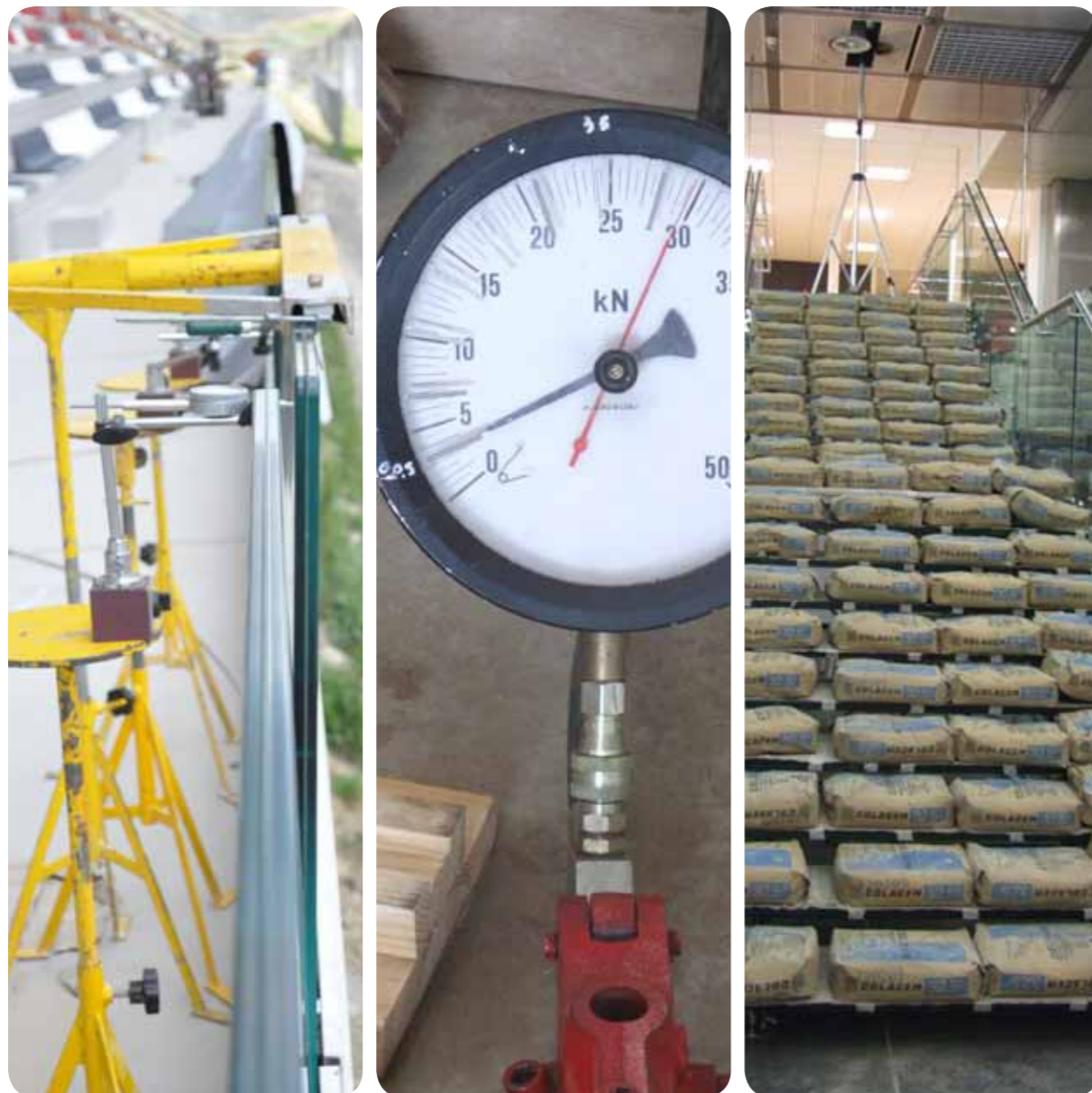
**90 years** - The group boosts up the aluminum staircases production and continues to develop considerably.

**2000** - Faraone expands its horizons producing new types of curtain walls, something never seen before on the Italian market, with a complete set of components and ensuring quality and professionalism.

**2004** - Faraone participates at the SAIE2 exposition located in the city of Bologna and presents the first steel&glass staircase, designed by architect Mauricio Cardenas Laverde. That was an important step that led to international recognition for the company and shows how research and innovation have always been a flagship for Faraone Group.

**2008** - New products characterized by exclusive design find their ways into the market stainless steel balustrades, or in anodized aluminium similar to steel and glass.

**2010** - Constant improvement aiming for top of the range products and Italian style leading to the production of innovative items: precious products that give the company a stronger individual identity able to overcome any economic crisis.

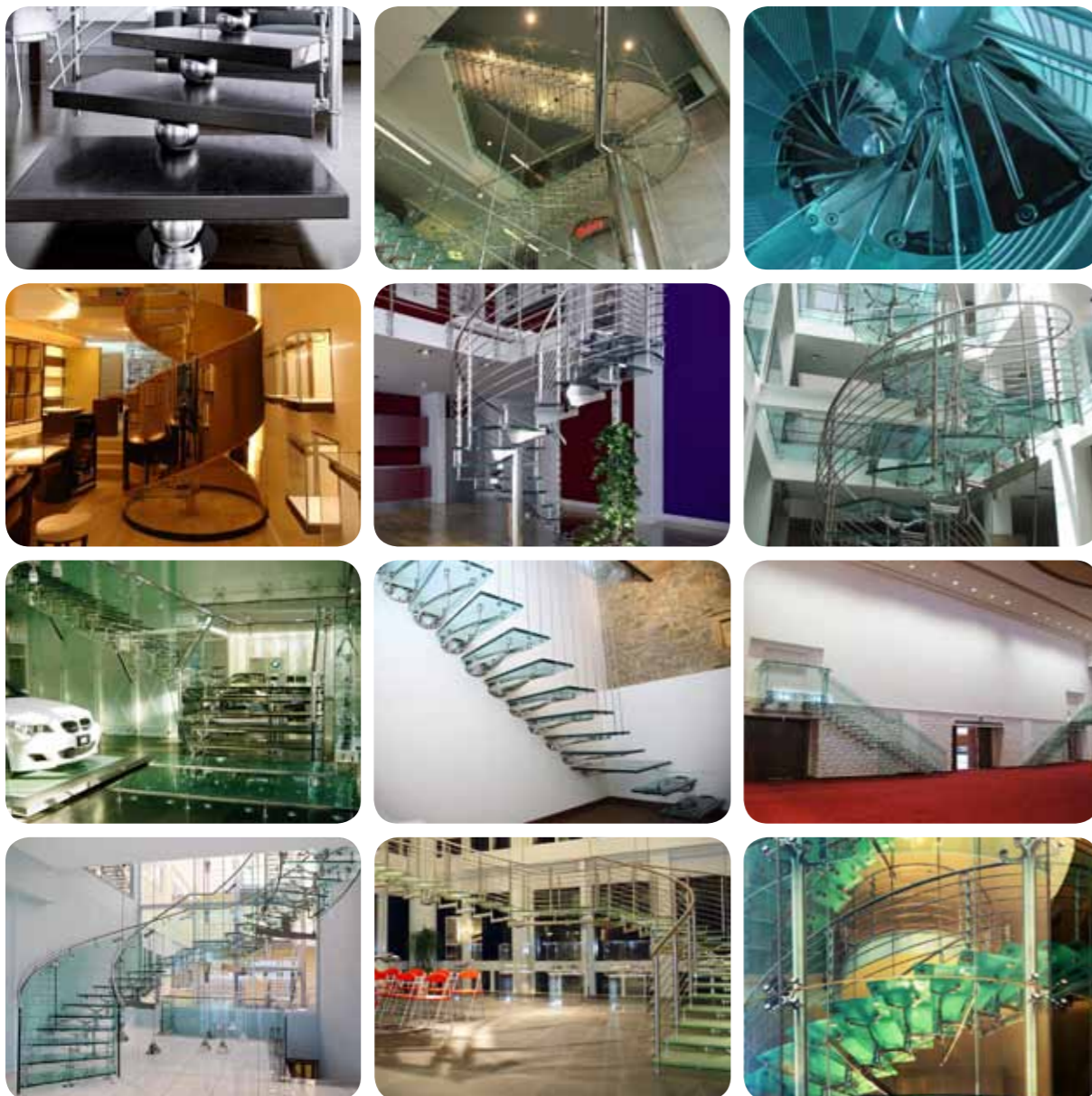


## OUR EXPERTISE

One of the strengths of our company is the long experience in this field. We can share over forty years of experience with our business partners. Faraone is well-known in Italy and is quickly becoming a point of reference abroad. The will to overcome future challenges is part of the company's DNA. This company constantly adapts itself to modern requirements and anticipates future trends. Faraone believes that it is important to maintain a strong internal R&D department for both technical and stylistic reasons. An entire internal production department is dedicated to products addressed to public, private, technical test and customer service. We have submitted all our products for testing and certification to an internationally accredited laboratory. Our products satisfy completely and in some cases exceed, all applicable security laws, guidelines and regulations in Italy and Europe. We are committed on the best security in our products design, minding quality, customer safety and innovation. For the production of components, Faraone selects reliable suppliers who operate with specific quality control plans. In addition to Italy, our domestic market where we can count on a network of more than 400 partners - Faraone is on foreign markets with an exportation that represents about 30% of the production.

## OUR CUSTOMER

Bmw | Bulgari | Mercedes | Hilton | Ferrari | Fuksas | Botta



# STAIRCASES

## > HIGH DESIGN INTERIOR STAIRCASES

Real sculptures standing in the air becoming the interior protagonists, unique and evolved pure design. Light and darkness contrast, glass and stainless steel generating chromatic play, solidity and aesthetic lightness synthesis at the same time. Faraone's interior staircases were born from a first intuition: model stainless steel structures made by lost-wax casting method maintaining glass harmonious aesthetic combination. From costumers point of view, Faraone's staircases show perfect adaptability to any interior style, extreme stability being developed starting from a structural body, complete freedom of components design.

## > STAIRCASES MODELS:

BALLOON – Design M. Rosa Lucarelli e Vittorio Alloggio

MISTRAL – Design Matteo Paolini

MATHIS – Design Matteo Paolini

TITANIA – Design Roberto Volpe

TWIN – Design Roberto Volpe

IMPERIALE – Design Mauricio Càrdenas Laverde

ANIMA – Design Mauricio Càrdenas Laverde

REGALE – Design Mauricio Càrdenas Laverde



# BALUSTRADES

## > DESIGN & SAFETY

Faraone has developed a wide range of balustrades to meet all the needs and aesthetic applications. We only use high quality materials such as steel, aluminum and glass design by creating solid structures unique and recognizable. Innovative solutions with LED projecting our systems to the future.

Safety is our power, all our products are subject to strict tests, obtaining certifications in accordance with the Italian and European law. Faraone Balustrades endless possibilities to fit all needs.

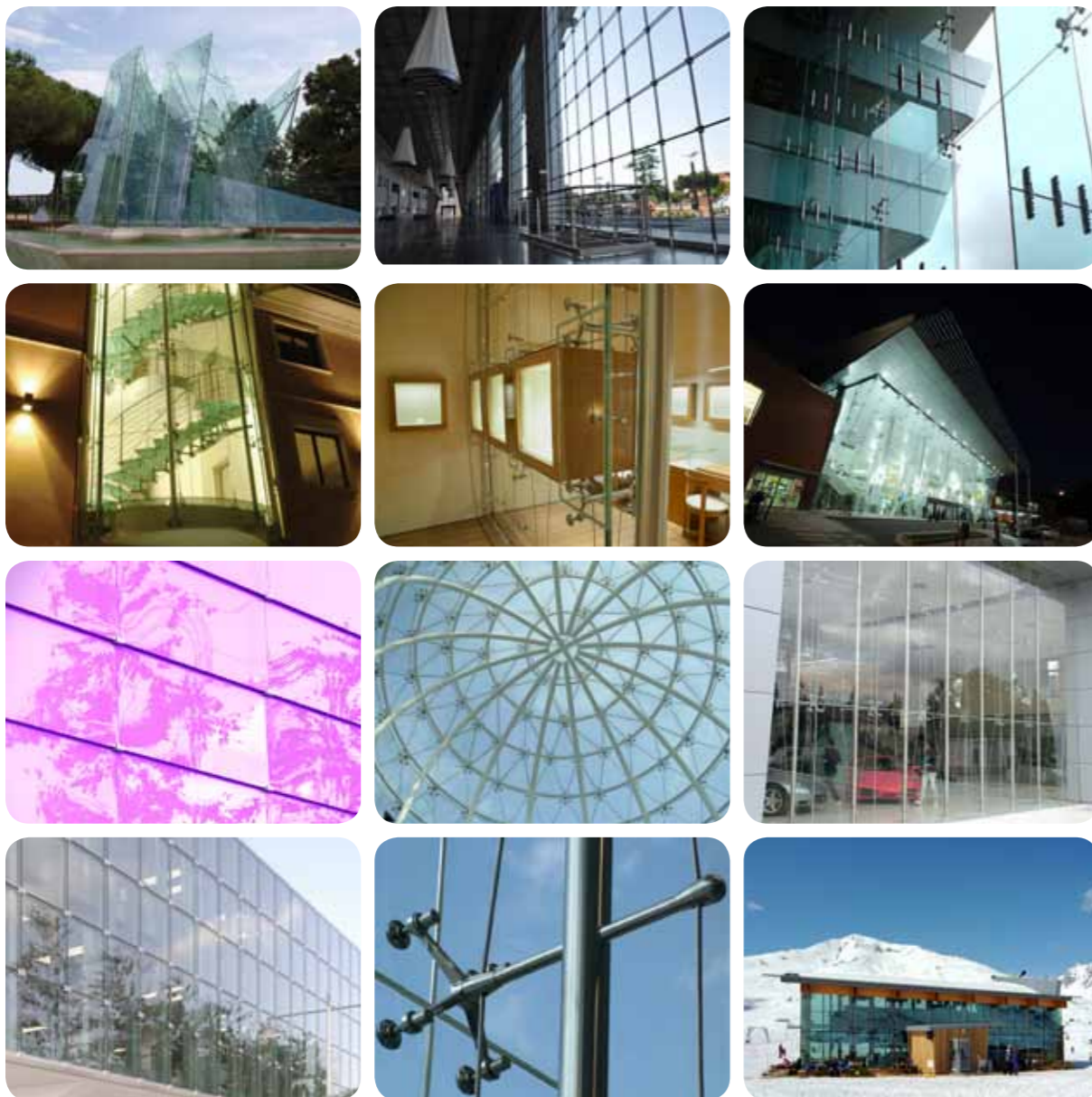
Safety and design made in Italy are combined to offer a unique experience.

## > BALUSTRADES LINES:

Stainless Steel | Stainless Steel & Glass | Aluminium | Aluminium&Glass | Enclosure

## > DESIGN BY:

Nino Faraone  
Matteo Paolini  
Roberto Volpe  
Fabrizio Zepponi



## CURTAIN WALL POINT-FIXING

### > THE POINT-FIXED GLASS SYSTEM TECHNOLOGY.

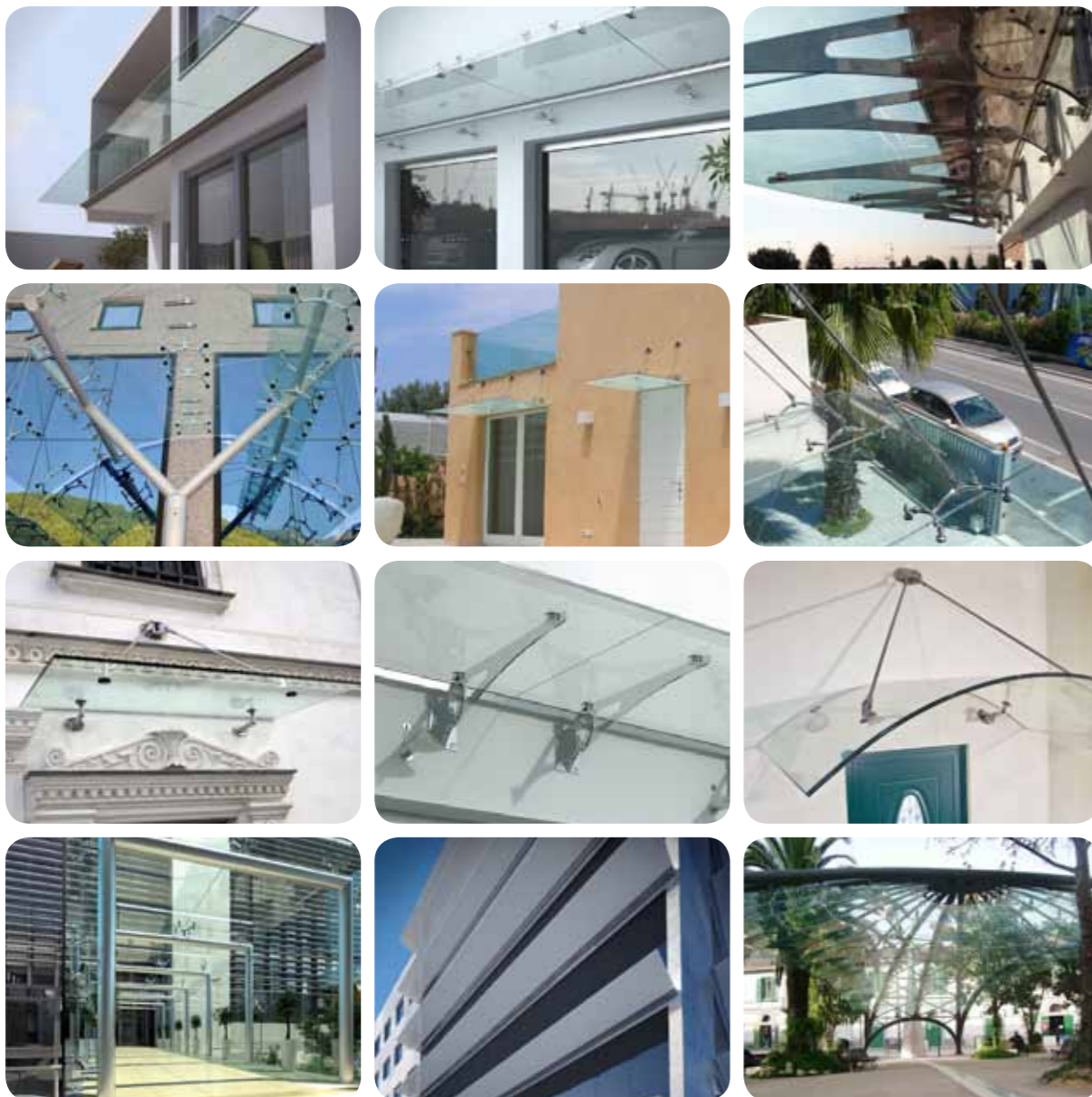
Catching light being able to develop it in order to be the absolute protagonist. Company's core business since the beginning, glass cladding production and installation has become the research target for "double skin" glass facade prototype. Following this innovative awareness Faraone has been focusing on point-fixing technology emphasizing transparency and design flexibility.

AIR SYSTEM together with the QUADRIFOGLIO SYSTEM made by stainless steel tensile structures, steel structures, extruded aluminium and glass vertical structures "Glasfin" rotules and spiders are the distinct programs giving Faraone the qualification of an international exclusive supplier for point-fixing transparent architectures.

KLIMA is the fast, cheap and easy way to create an open wide facade. The Klima system was designed to use insulated glass without drilling the glass. With Klima it is possible to acquire a new way of relating with the outside world, thanks to an open wide glass wall without any thermal dispersion and an insulation power of  $U_{cW} 0,7 \text{ W/m}^2\text{K}$ .

VETRISSIMO T and VETRISSIMO N are the perfect combination of design and technology for sophisticated shingled glass facades. The horizontal overlap of the glass provides both good ventilation and good protection from the weather. This system stands for its ease of installation; the mount is particularly suitable for attached facades of buildings, arcades and staircases glazed with permanent ventilation.





## CANOPIES

### > THE NEW URBAN DÉCOR AND MORE

Design meets function for an aesthetic solution with high emotional impact. Their names are Linea, Sfera, Aries, Gran Sasso and Clock, these are Faraone's canopies.

High quality, extreme solidity and, at the same time flexibility are the real strength points of this product range suitable for any different customer need.

Available in several sizes answering to different possibilities of customization such as silk screen design. All glasses are tempered and laminated combined with Aisi 316 stainless steel accessories.

### > CANOPIES MODELS:

LINEA - Design Sabatino Faraone

GRAN SASSO - Design Sabatino Faraone

CLOCK - Design Roberto Volpe

SFERA - Design Roberto Volpe

ARIES - Design Roberto Volpe



## GLASS PARTITIONS, DOORS, BOX

### > ELEGANCE AND FUNCTIONALITY MERGE INTO THE LIGHTNESS OF GLASS

A wide range of accessories and systems for dividing interior spaces. Sliding doors, hinged doors, automatic gates, electronic closing doors, all-glass wall partitions. Box shower: linear, square and curved.

The Faraone range of doors is made up of proposals that are aesthetically different but that also enjoy complete reliability over time.

The Company has undertaken a real design process with a view to introducing ever new functional innovations, creating structures that provide superior performance.

An overall vision that combines technological innovation with stylistic variety, to create spaces that are ever more in line with every ambient.

Aluminium and glass: two natural materials that are environment-friendly and always used for new aesthetic and functional solutions.

### > OUR LINES:

Glass Partitions | Glass Doors | Glass Box-Shower



## WE ARE PASSIONATE ABOUT **DESIGN**

We believe that design is an integral part of every project. The planning system developed by Faraone is characterized by the study of new product lines and the attention devoted to the details of every new product. Aesthetic care and ongoing research into new materials are the basis of new concepts of products and endless furnishing solutions.

From the synergy between internal and external designers, our ideas come to life and reach you.

### > INTERNAL DESIGNERS:

Nino Faraone  
Matteo Paolini  
Roberto Volpe  
Fabrizio Zepponi

### > EXTERNAL DESIGNERS:

Mauricio Cardenas Laverde  
Massimo Iosa Ghini  
M. Rosa Lucarelli  
Vittorio Alloggio



Export department  
Mr Luca Renzitti  
renzitti@faraone.it  
+393939547816  
+0861 784225

### FARAONE SRL

Via Po, 12 64018 Tortoreto (TE)

Italy

T. +39 0861 784200

F. +39 0861 781035

faraone@faraone.it

www.faraone.it

